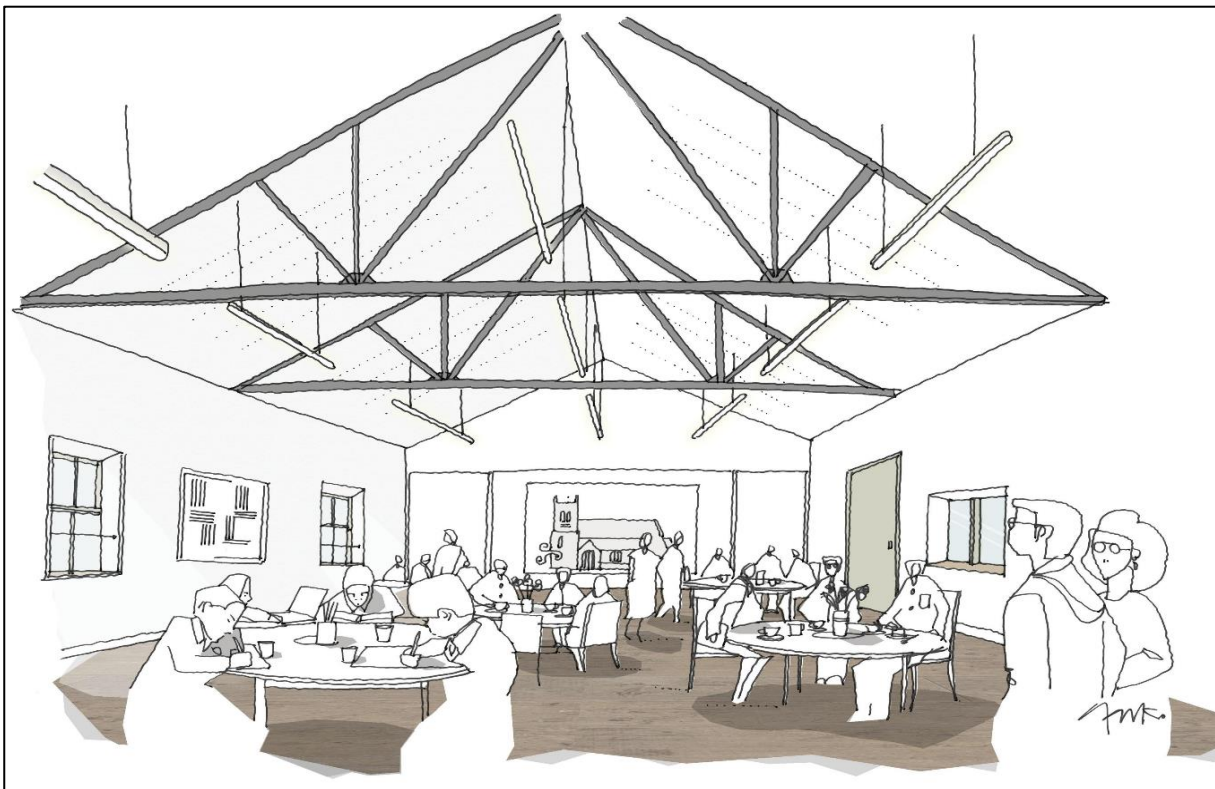




All Saints, Ilkley



'Building for the Future' *Completing the work* *Connecting the community* *Continuing the ministry*



Sunday June 23rd 2019 was a special day in the life of All Saints Ilkley. It was the date of the Thanksgiving Service (after 8 years of praying, planning, fundraising, building & relocating services), to mark our return to the church buildings with the completion of Phase 1 of our building redevelopment.

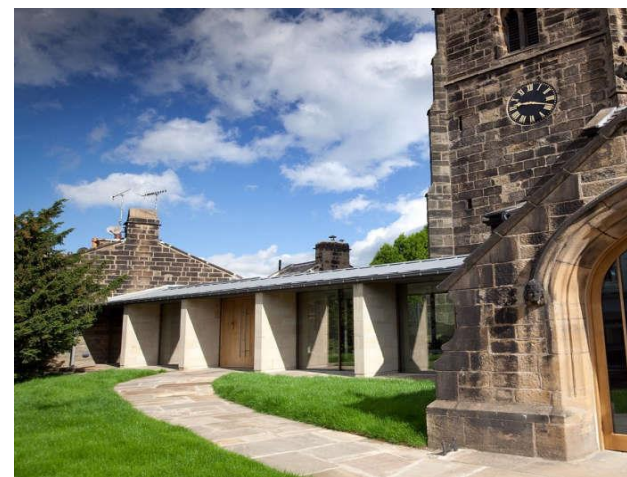
It was a great community celebration, led by Bishop Toby, where we gave thanks to God for His goodness to us and committed ourselves afresh to use our God-given resources to be a blessing to the community and a beacon for the Gospel.

Of course, those who have joined the church family since then won't remember what the church used to look like but, as you can see, it was quite a change!

BEFORE



AFTER



Since then we have been thrilled to see our new buildings (the main church, the Link, the kitchen and the toilet facilities), being used in many different ways by the church family (*to grow our children's and youth work, for worship, fellowship, mission and ministry*) and by

the wider community (i.e. foodbanks, concerts, Ilkley Literature Festival, plays, election hustings, school visits etc.)

Primarily our buildings are to enable us to “to see an ever-increasing number of people coming into an ever-deepening relationship with God, overflowing with His blessing to our community and beyond.”

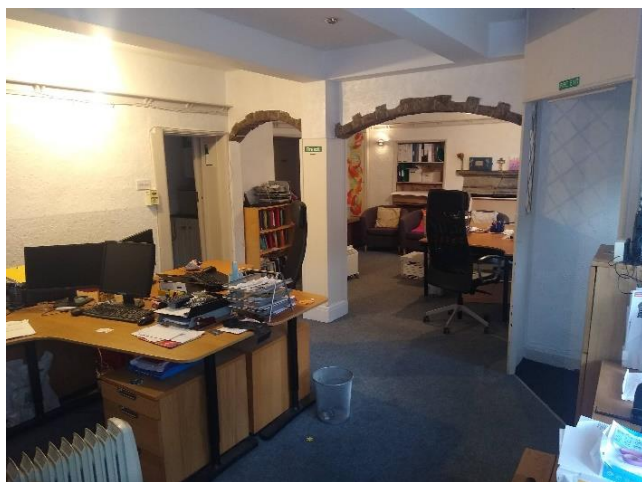
But they have also become a key resource in the community life of Ilkley and a source of pride and joy across our town.

The only downside of Phase 1 is that it has been increasingly obvious that there is a gulf between the quality of the resources it has given us and the other rooms in Church House (see below).

Church House upstairs – the Church Hall



Church House downstairs - the Church Office



Therefore, after a pause of 5 years, the PCC have decided to give the go-ahead to a fundraising appeal for Phase 2 of our building project: the redevelopment of Church House, both the hall (upstairs) and the church office (downstairs).

What work is planned?

The plan for 'Phase 2' includes;

- ✓ *raising and soundproofing the hall floor*
- ✓ *removing the 'temporary' ramp from the Link into the hall*
- ✓ *removing the false ceiling in the hall, opening up the roof space*
- ✓ *improving access to the kitchen hatch from the hall*
- ✓ *providing improved accessible storage in the hall*
- ✓ *investigating the feasibility of solar panels on Church House*
- ✓ *creating a new improved space for the Church Office*
- ✓ *creating a new meeting room for church and community usage*
- ✓ *internally connecting upstairs and downstairs in Church House*
- ✓ *providing new heating and lighting upstairs and downstairs*
- ✓ *installing an accessible toilet and kitchenette downstairs*

When finished this work will greatly improve our buildings and provide substantive and long-term benefits such as;

- ✓ *improved heating and lighting upstairs and downstairs*
- ✓ *greater energy efficiency and improved soundproofing*
- ✓ *safer/easier storage and increased disability access/facilities*
- ✓ *more flexible group, office and meeting spaces*
- ✓ *the same quality of facilities across all our church buildings*
- ✓ *improved facilities for all church groups and activities*
- ✓ *facilities to help grow our children's and youth work and to support the ministry of our children's and youth leaders*
- ✓ *'fit-for-purpose' working conditions for our staff*
- ✓ *improved resources to offer for community usage*
- ✓ *increased potential for letting income*

How much will it cost?

- The total cost of the work (including VAT & fees) is **£488,000**.
- We have **£47,000** from grants and funds already secured.
- We have a **£30,000** pledged grant when the work is completed.
- This means the amount we are looking to fundraise is **£411,000**.
- Our aim is for the work to be done (if funds allow) by Easter 2025.
- The PCC will regularly monitor progress of the fundraising appeal.
- When the work is taking place, we will make alternative provision for church and community groups that normally meet in the hall.

How are we planning to raise the funds?

- We are applying to appropriate grant making trusts
- We are exploring fundraising possibilities in the local community
- We will be holding special events to raise awareness and funding

However, realistically, much of the funding will come from the generous and sacrificial giving of the church family. But before you consider what you might give, there are 3 things you need to have.

1. **Prayer:** it's God's work we do, so it's God's will we need to know.
2. **Information:** find out more about the details of 'Phase 2'. If it's not available or obvious, email ASI.Phase2@allsaintsilkey.org
3. **Vision:** in 2011, the then PCC affirmed the following statement.

'Since its inception, the All Saints Church Development Project has been seen as an investment by this generation for the next 100 years of life at All Saints and Ilkley.'

The only words to change (to make explicit what is implicit) are '*an investment in the Gospel*'. If either 'Phase 1' or 'Phase 2' of our building project were ends in themselves (to give All Saints a suite of buildings to be proud of), that would be a vision to reject. But if our building projects are a means to an end (to give us a suite of buildings that we can use for effective Gospel ministry), that's a vision for everyone to wholeheartedly embrace.

How can you respond financially?

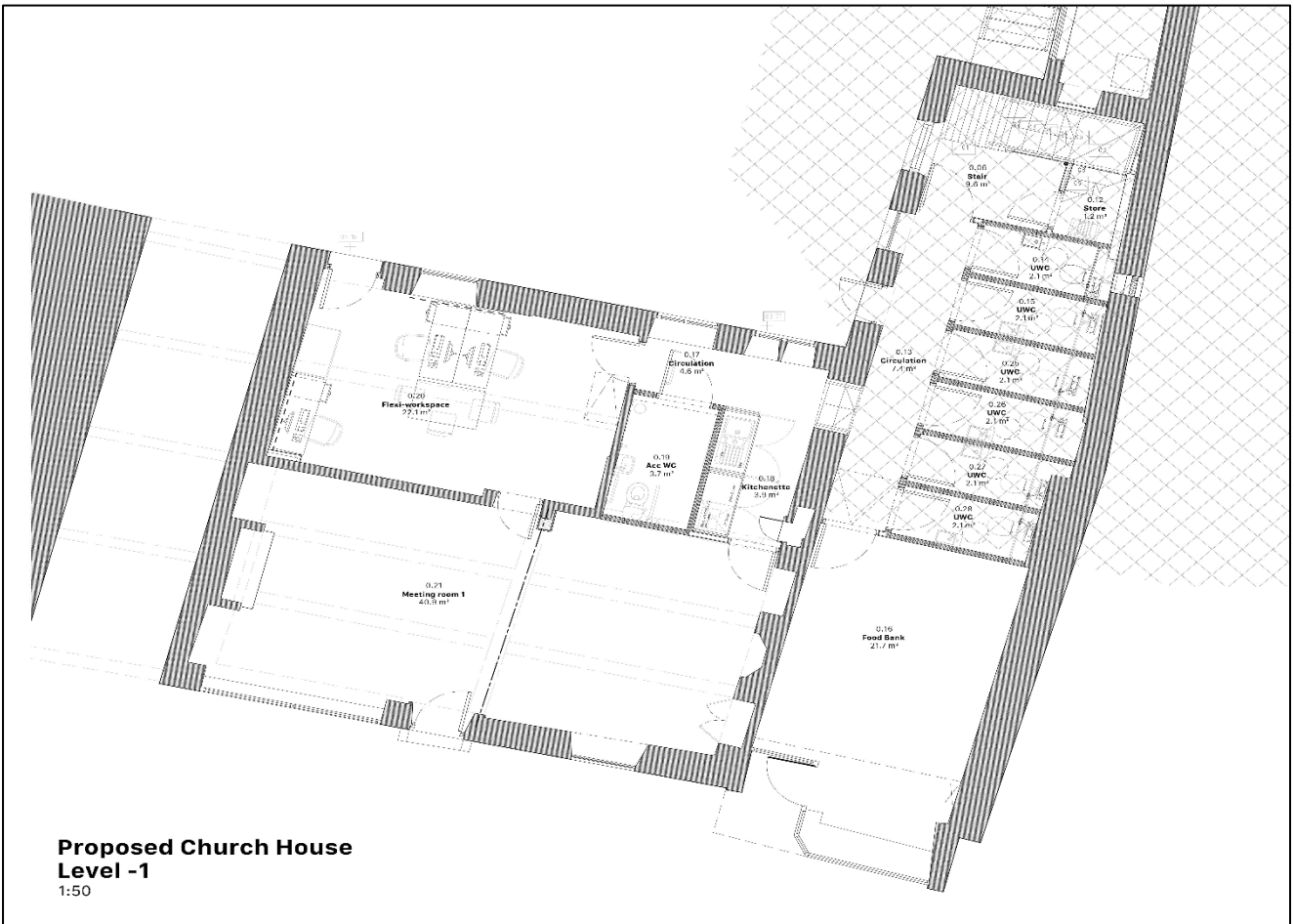
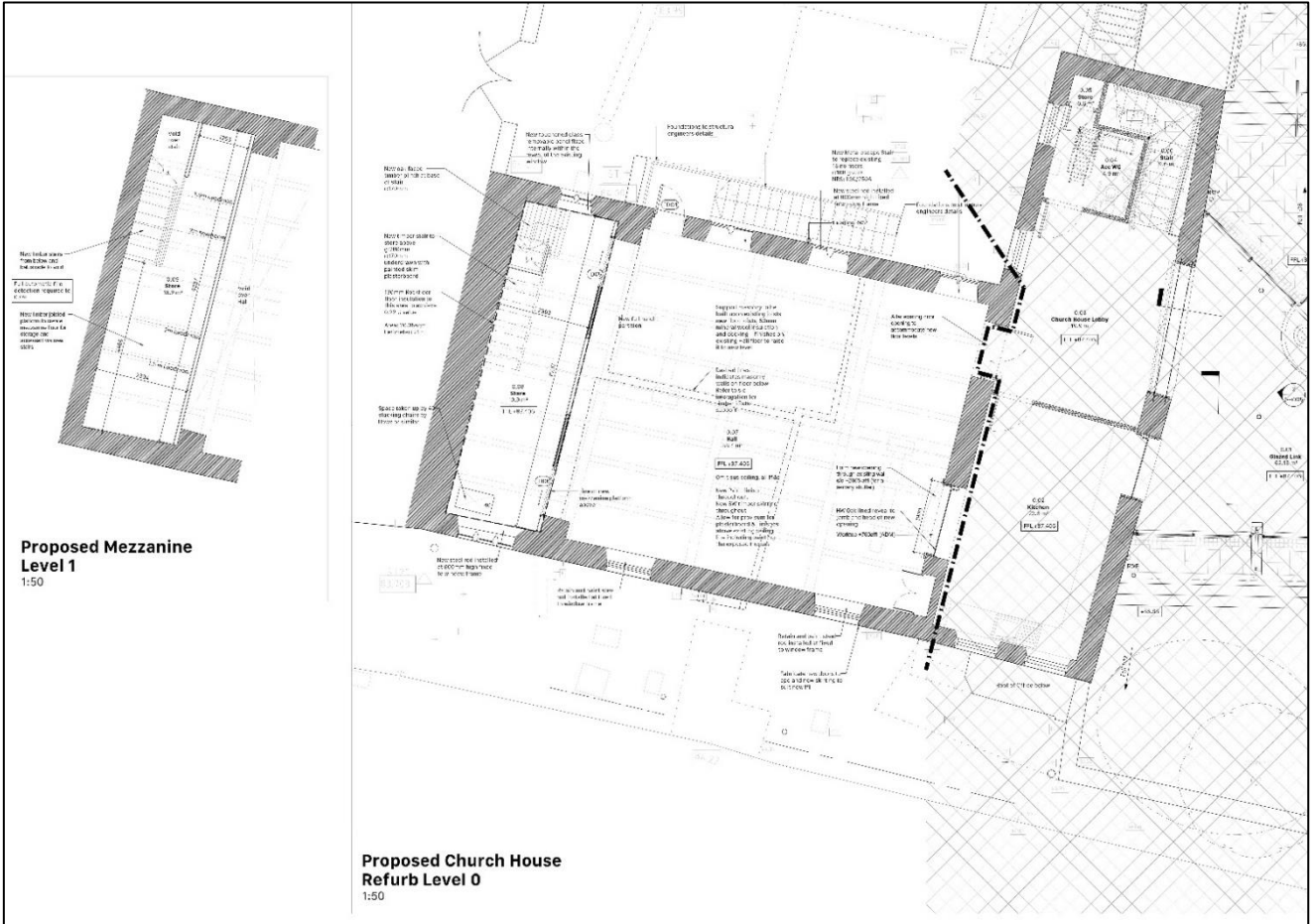
Every gift, large or small, is of huge value to the fundraising appeal. Using the appropriate forms in the information pack, you can respond financially through one or more of the following options

- A direct gift - via Bank Transfer, a cheque or debit/credit card
- A monthly, quarterly or annual Standing Order
- A future pledge (committing to future financial gifts to the appeal at a time of your choosing, possibly in addition to a gift now)

Tithing

- Individuals can choose to 'tithes' their gifts (10% will be given to support building projects connected with our Mission Partners.)
- For clarity, there will be a '**Yes**' or '**No**' box on the response form.
- If each individual gift were tithed, this would increase the total amount we need to fundraise to **£452,100**

The architect's plans for 'Phase 2'



**Unless the LORD builds the house,
those who build it labour in vain.
Unless the LORD watches over the city,
the watchman stays awake in vain.**

Psalm 127:1

On November 4th 2018, the last Sunday before relocating to the Clarke Foley Centre so that 'Phase 1' of the building redevelopment could start, Mike preached on Psalm 127:1 (with communal origami house-building as an illustration!) In that sermon he said the following, words that are just as relevant as we embark on 'Phase 2'

'The Hebrew word translated in Psalm 127:1 as 'in vain' is 'shav'. It means empty, pointless, a waste of time and effort. The Psalmist uses two illustrations (that would have been very relevant to the people who first read it) of what 'shav' looks like; a house that collapses and a city that is captured by enemies.

The reason the house collapsed and the city was captured was not because the builder or the watchman were negligent (the Hebrew words used imply a serious commitment to their tasks) but because no house could be built properly and no city could be guarded properly unless God was the foundation, framework and focus of the work in their everyday lives. If He wasn't, then whatever they did would be 'shav' (in vain) however well it was done.

So as we embark on this building work, let's give thanks for all that this church building has meant in the past, look forward to all it will mean in the future and remember that the real church is the people not the building! But most of all, let's reaffirm our commitment to putting God's presence, will and purpose at the heart of all we do. If we don't, then however successful our efforts, they will be 'shav'. But if we do, then God will work in and through us for His glory."

Over the last 5 years, 'Phase 1' of the All Saints building project has been used to bless our community and to be a beacon for the Gospel. So, as you prayerfully consider your financial response to the Phase 2 appeal, please ask yourself this question.

"Will this building project increase our ability to help all ages to see the love of Christ in action and to grow in their knowledge of, faith in and commitment to Jesus Christ?"

If your answer is YES, please support the Phase 2 appeal!



All Saints, Ilkley



‘Building for the Future’

Completing the work

Connecting the community

Continuing the ministry

Get God involved.

Unless the Lord builds a house
the work of the builders is wasted.
Unless the Lord protects a city
guarding it will do no good.

Psalm 127:1



prayables
photo by elizabeth lles
on unsplash